



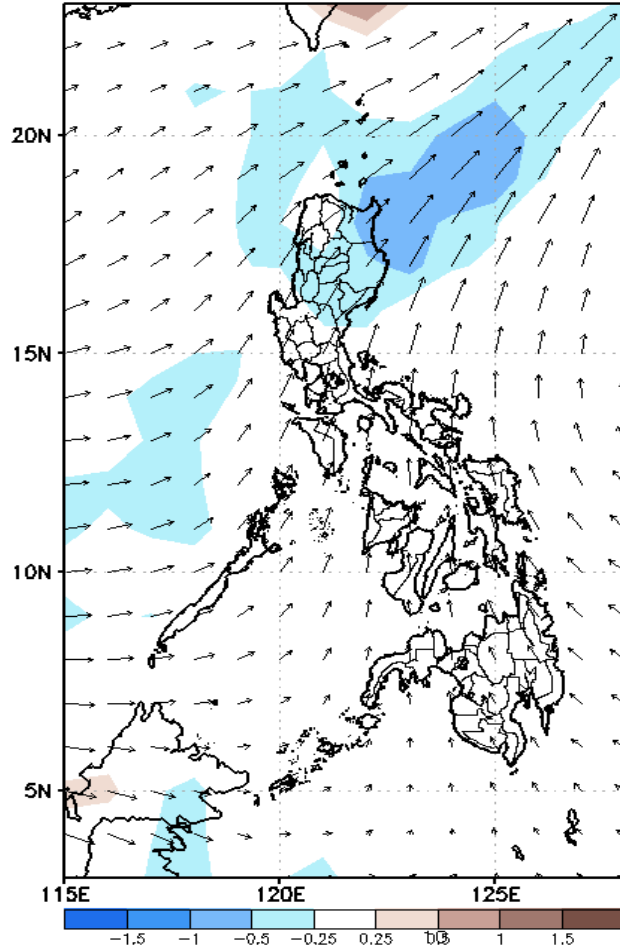
# Week 1 & Week 2 Forecast for the Philippines using GEFS Model



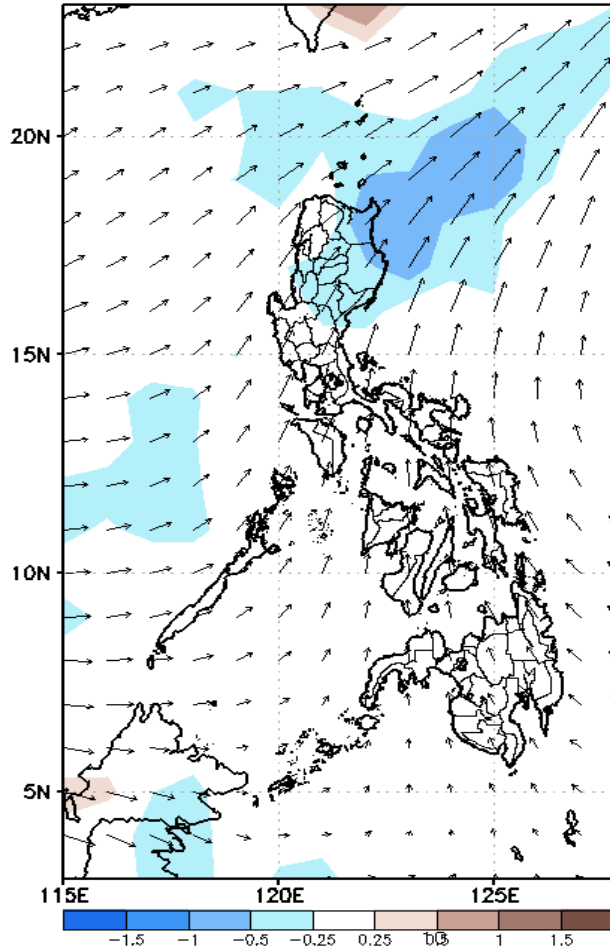
# GEFS Week-1 Forecasts: Divergence & Wind Anomaly

## Week 1: May 16-22, 2022

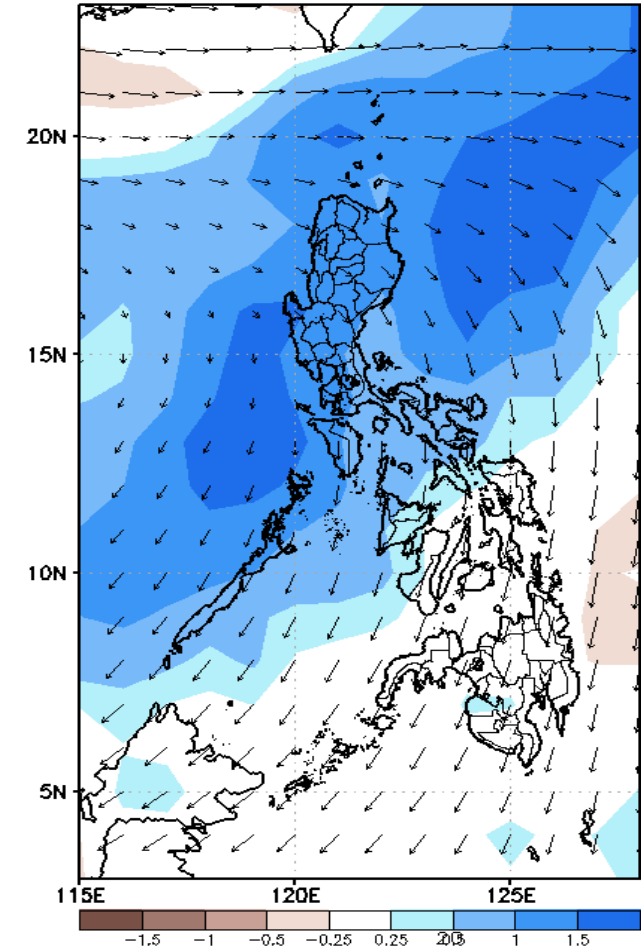
GEFS Week-1 850-hPa Divergence and Wind Anom  
Valid: 20220516 - 20220522



GEFS Week-1 700-hPa Divergence and Wind Anom  
Valid: 20220516 - 20220522



GEFS Week-1 200-hPa Divergence and Wind Anom  
Valid: 20220516 - 20220522

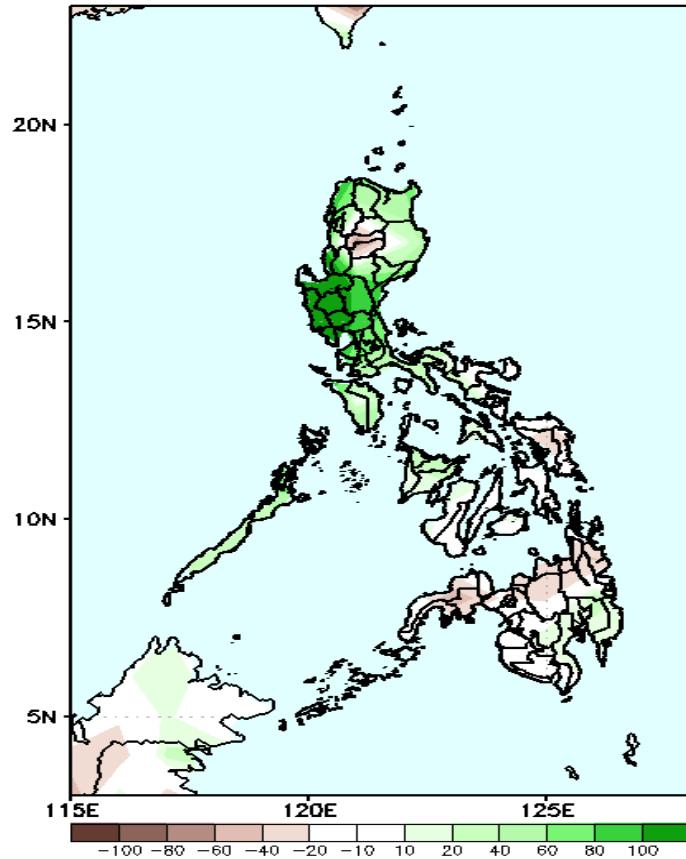


Upper and low level Divergence suggest a likelihood of moderate to strong precipitation in most areas of Luzon and Western Visayas. Southwest windflow affecting the western sections of Luzon and Visayas while Easterlies affecting most parts of the country attributing to warmer temperatures during the forecast period

# Precipitation Anomaly and Exceedance Probability > 25/50 mm

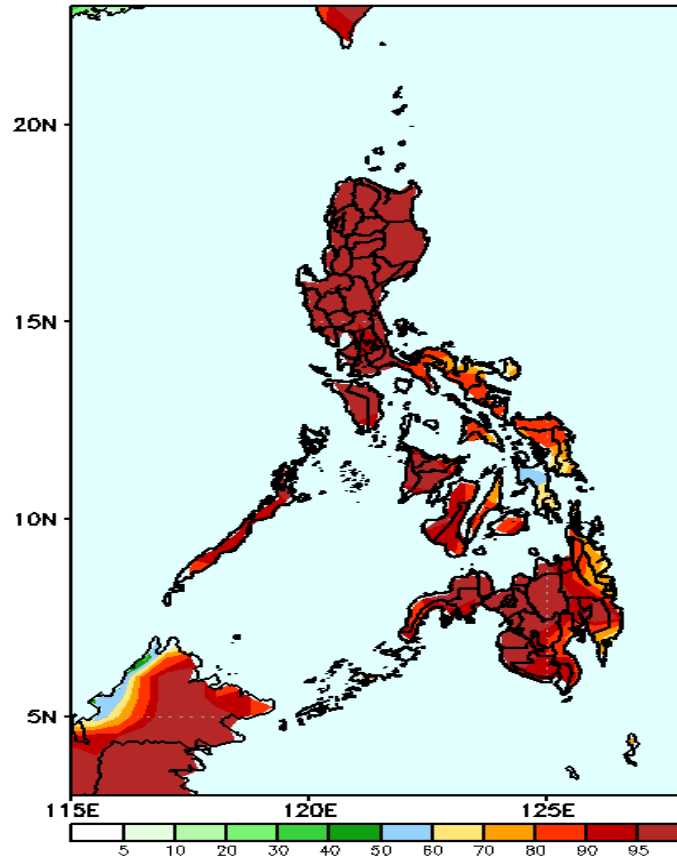
## Week 1: May 16-22, 2022

GEFS Week-1 Precip Anomaly  
Valid: 20220516 - 20220522



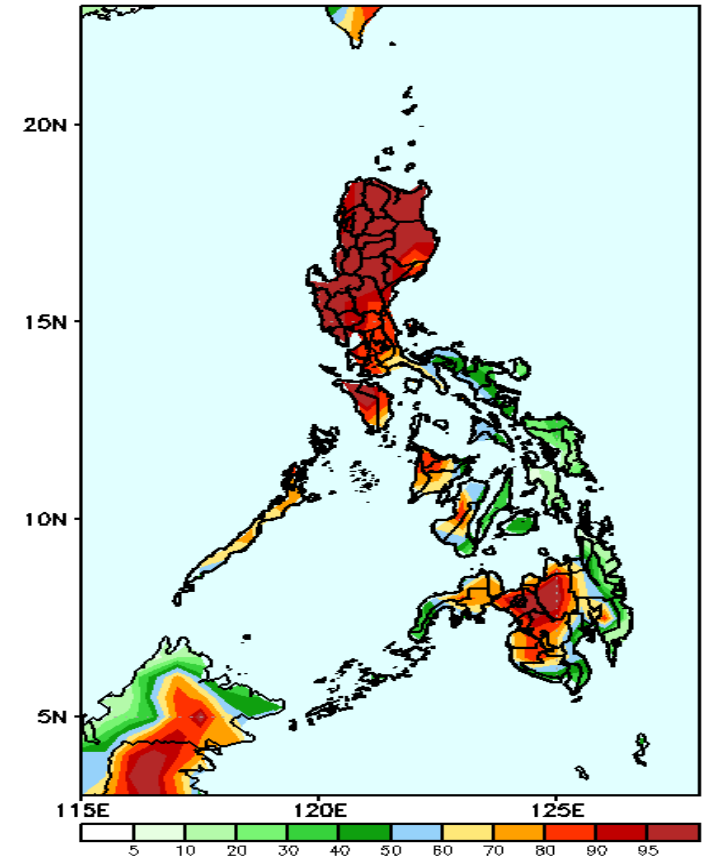
Increase of rainfall of more than 100mm in Central Luzon, Pangasinan, La Union & Benguet and 40-80mm for the rest of Luzon and Panay Island while rainfall deficit of 20-60mm in Mt. Province, Ifugao and the rest of Visayas and Mindanao during the forecast period .

GEFS Week-1 Exceedance Prob. > 25mm  
Valid: 20220516 - 20220522



High probability of rainfall to exceed 25mm in most parts of the country during the forecast period.

GEFS Week-1 Exceedance Prob. > 50mm  
Valid: 20220516 - 20220522

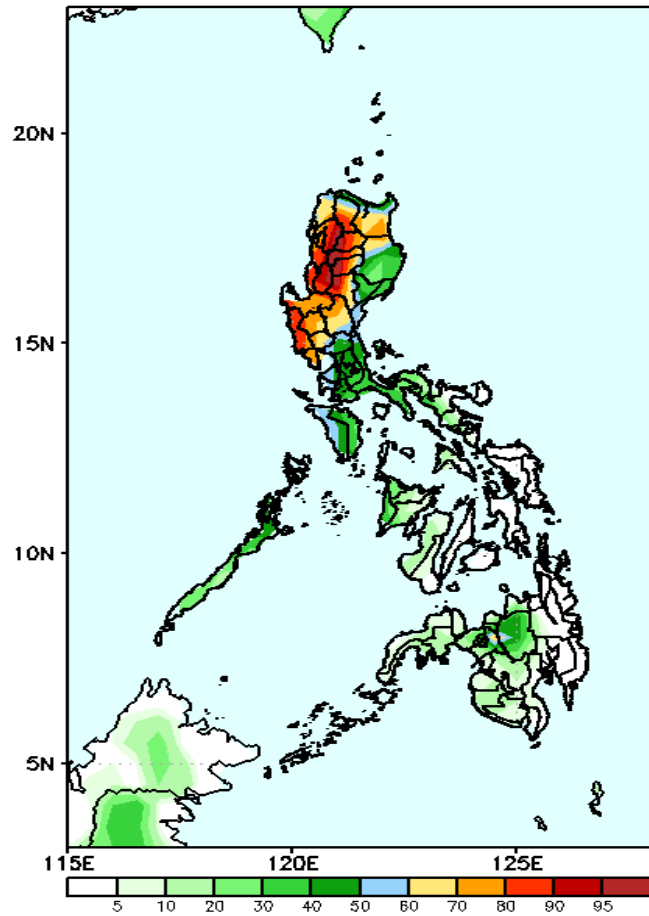


High probability of rainfall to exceed 50mm in most parts of Luzon and western parts of Visayas and Mindanao(including Bukidnon) while less likely for the rest of the country during the forecast period.

# Exceedance Probability > 100/150/200 mm

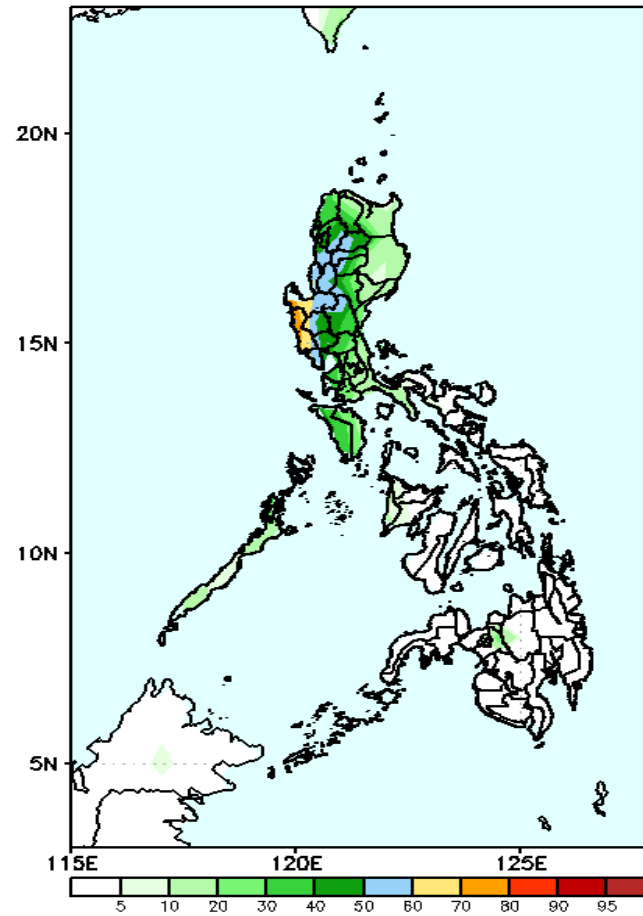
## Week 1: May 16-22, 2022

GEFS Week-1 Exceedance Prob. > 100mm  
Valid: 20220516 - 20220522



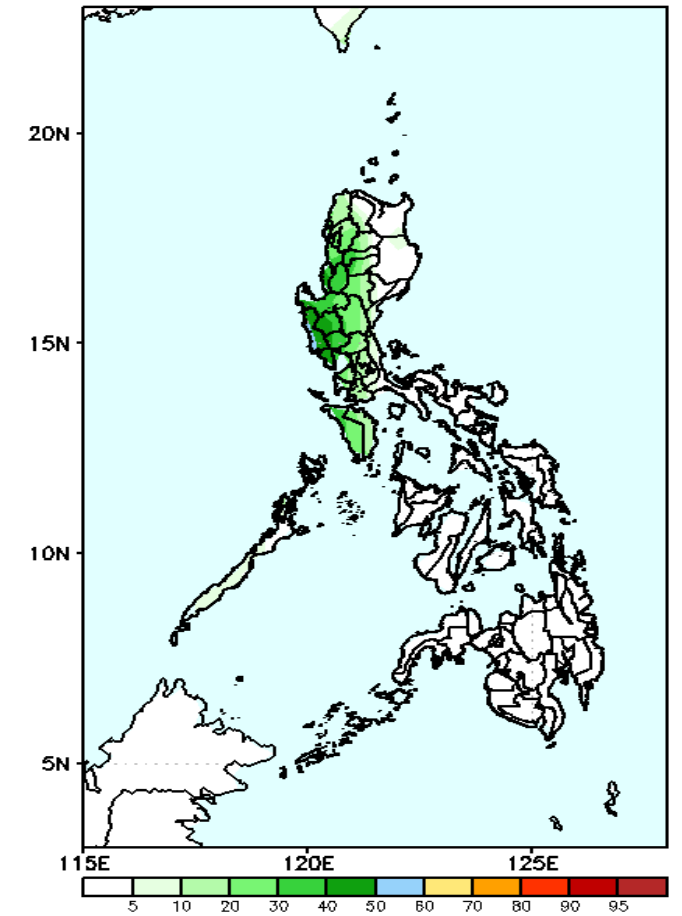
High probability of rainfall to exceed 100mm in most parts of northern and western Luzon while less likely for the rest of the country during the forecast period.

GEFS Week-1 Exceedance Prob. > 150mm  
Valid: 20220516 - 20220522



Low probability of rainfall to exceed 150mm in most parts of the country except in Zambales and Pangasinan where there is 60-85% chance during the forecast period.

GEFS Week-1 Exceedance Prob. > 200mm  
Valid: 20220516 - 20220522



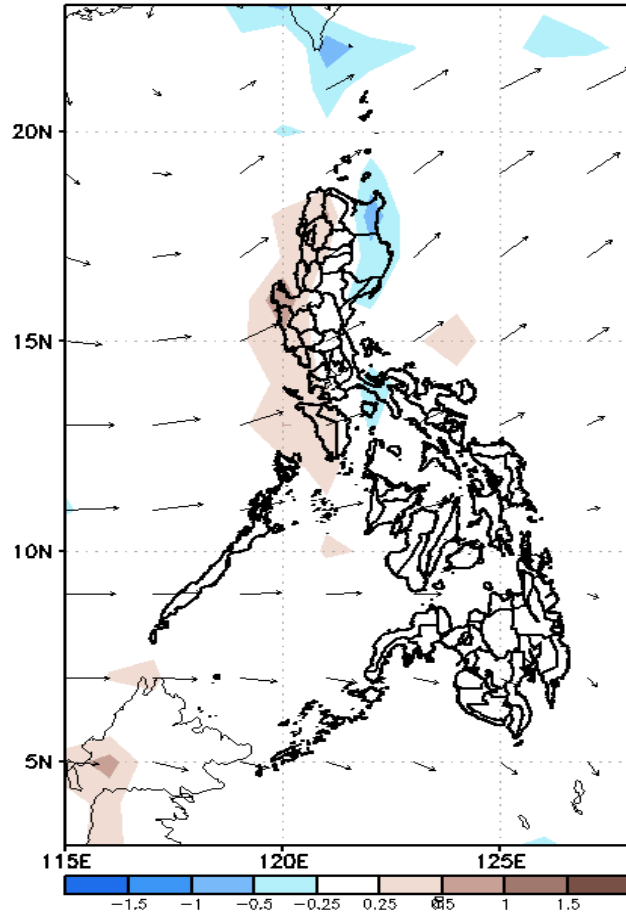
Low probability of rainfall to exceed 200mm in most parts of the country during the forecast period.



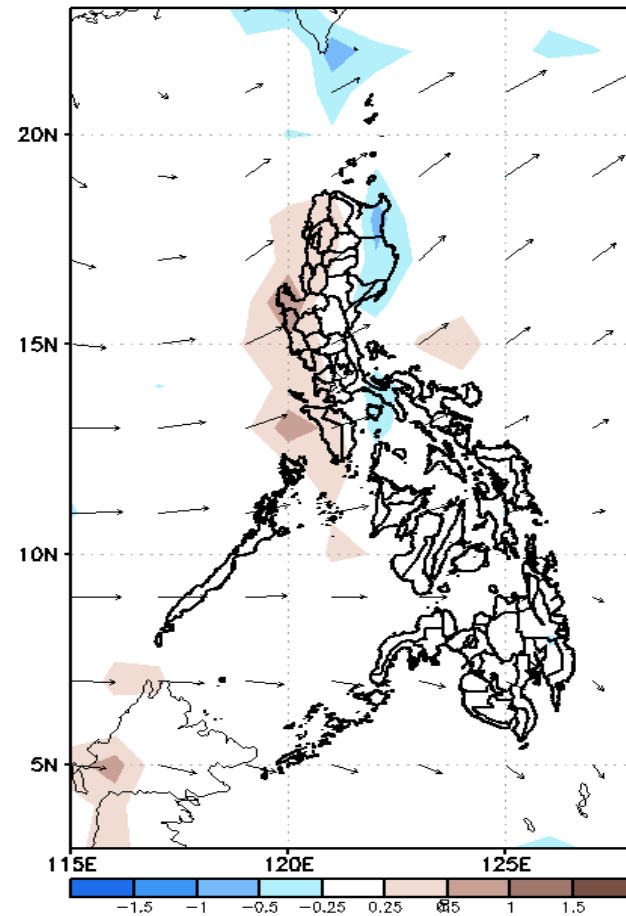
# GEFS Week-2 Forecasts: Divergence & Wind Anomaly

## Week 2: May 23-29, 2022

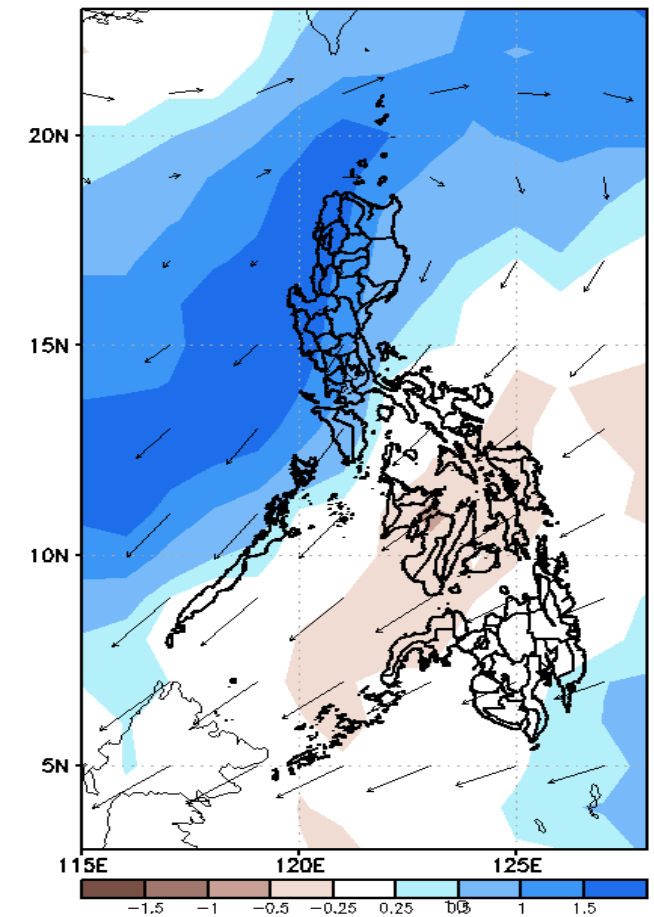
GEFS Week-2 850-hPa Divergence and Wind Anom  
Valid: 20220523 - 20220529



Week-2 700-hPa Divergence and Wind Anomaly  
Valid: 20220523 - 20220529



Week-2 200-hPa Divergence and Wind Anomaly  
Valid: 20220523 - 20220529

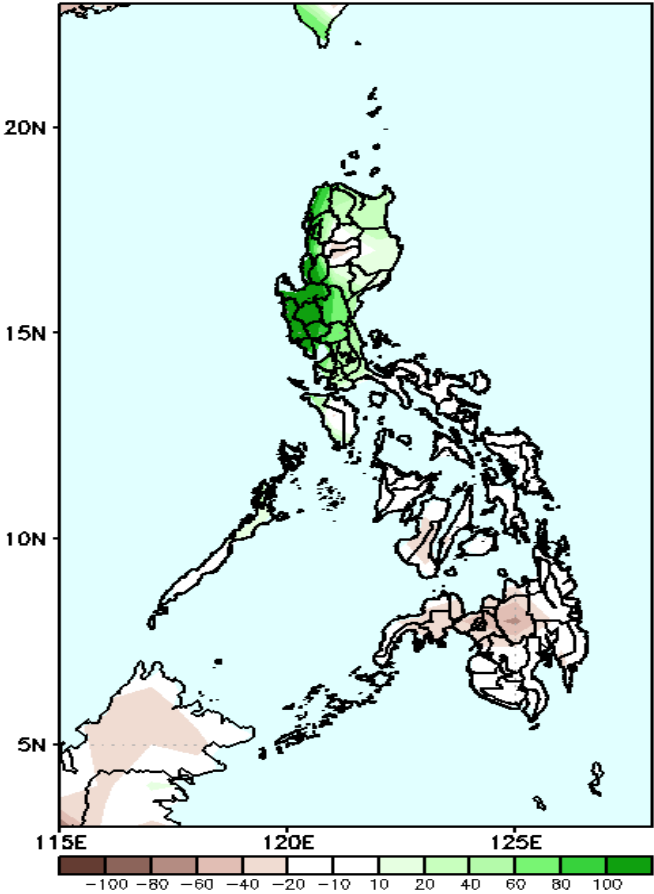


Upper and low level Divergence suggest a likelihood of moderate to strong precipitation in most areas of Luzon. Southwest windflow affecting the western sections of the country while Easterlies affecting the rest during the forecast period.

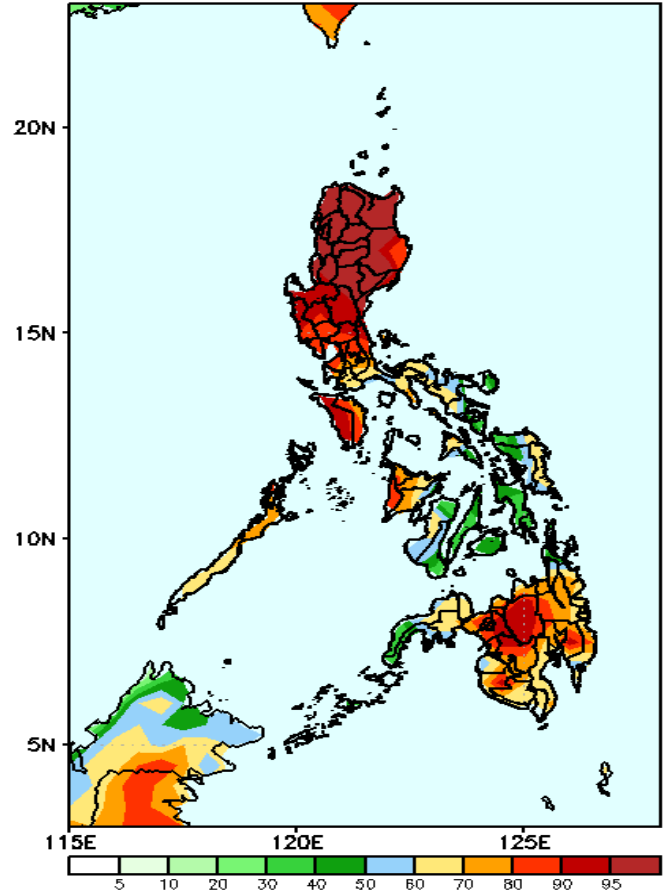
# Precipitation Anomaly and Exceedance Probability > 25/50 mm

## Week 2: May 23-29, 2022

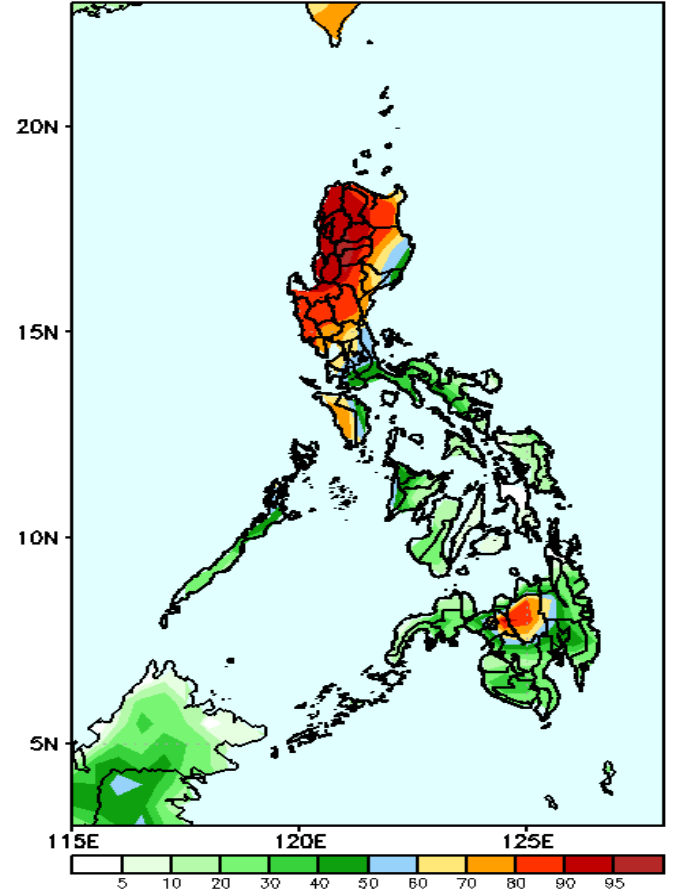
GEFS Week-2 Precip Anomaly  
Valid: 20220523 - 20220529



GEFS Week-2 Exceedance Prob. > 25mm  
Valid: 20220523 - 20220529



GEFS Week-2 Exceedance Prob. > 50mm  
Valid: 20220523 - 20220529



Increase of rainfall of more than 100mm in Ilocos Region & Central Luzon and Benguet and 40-80mm for the rest of Luzon while rainfall deficit of 20-70mm in Visayas and Mindanao during the forecast period .

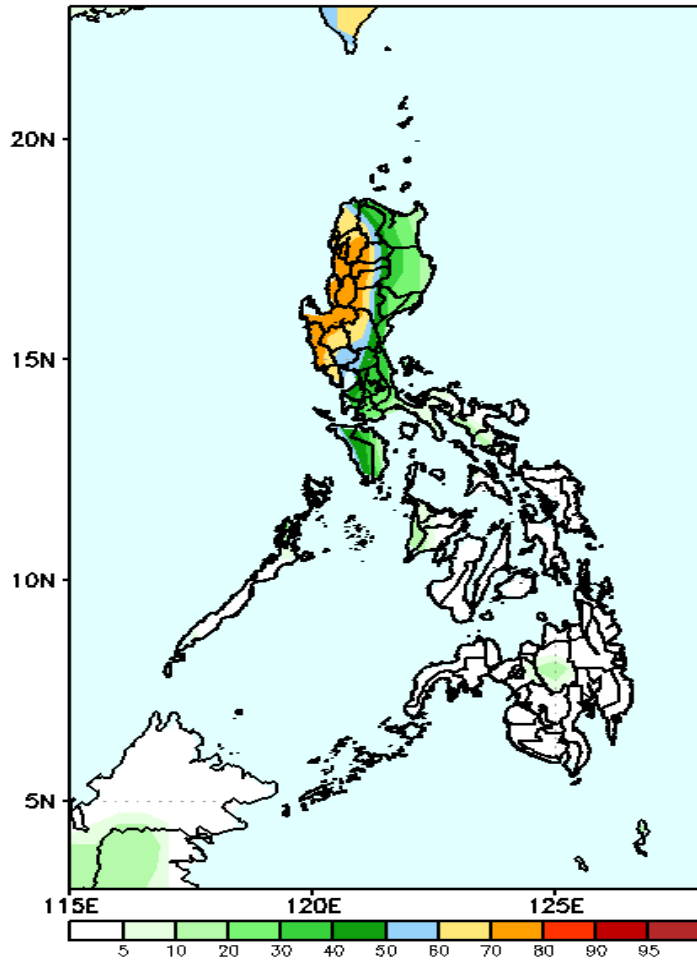
High probability of rainfall to exceed 25mm in most parts of Luzon, Western Visayas, Eastern Samar and most parts of Mindanao while less likely for the rest Visayas during the forecast period.

High probability of rainfall to exceed 50mm in most parts of Luzon and Bukidnon while less likely in Visayas and Mindanao during the forecast period

# Exceedance Probability > 100/150/200 mm

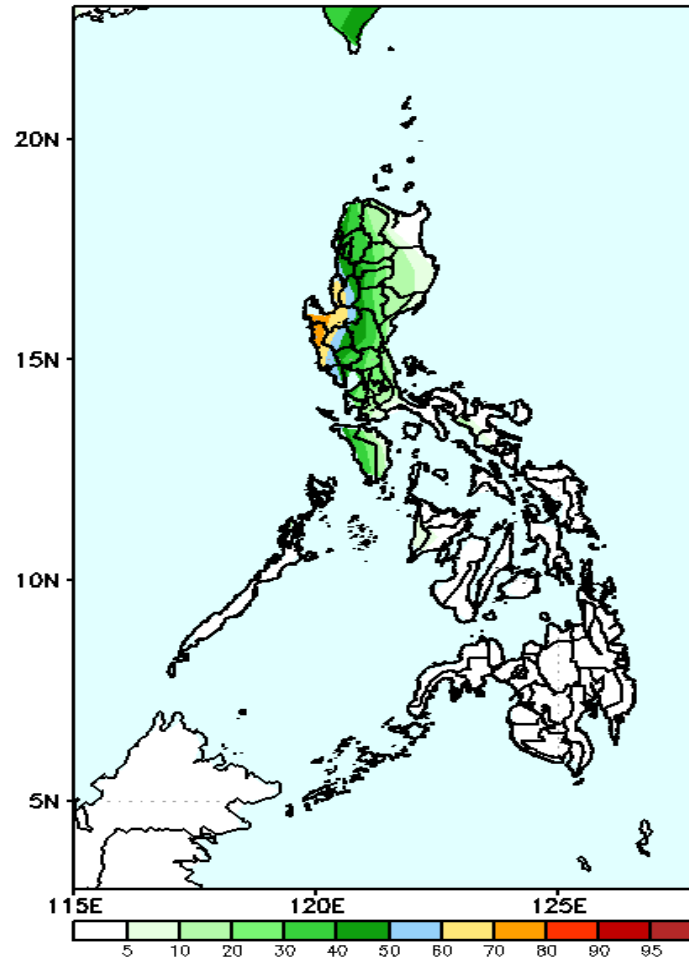
## Week 2: May 23-29, 2022

GEFS Week-2 Exceedance Prob. > 100mm  
Valid: 20220523 - 20220529



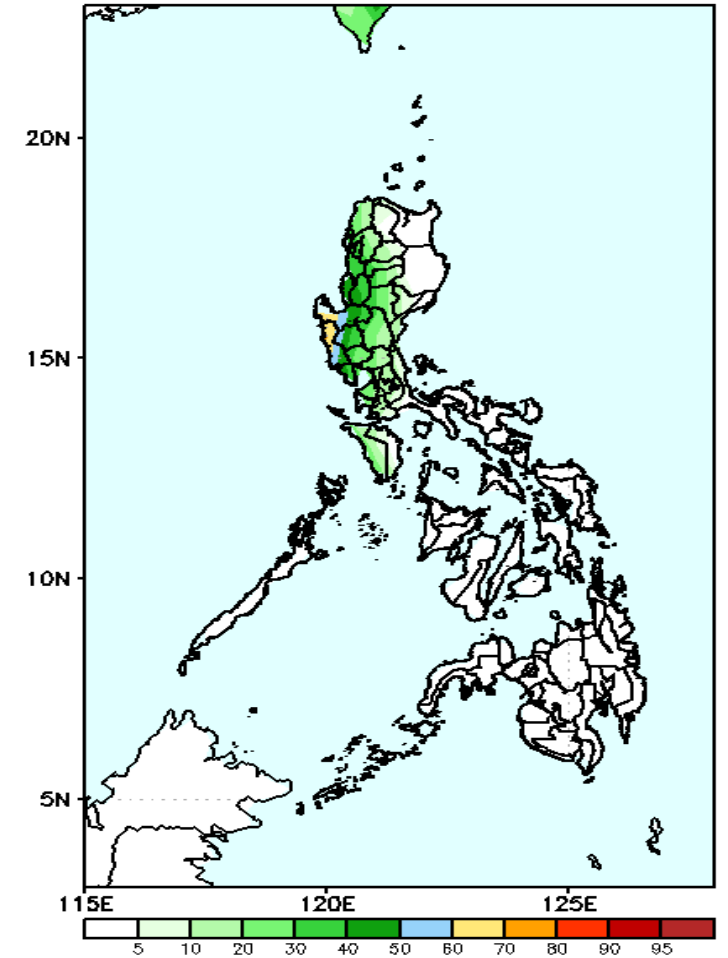
60-85% probability of rainfall to exceed 50mm in western Luzon while less likely for the rest of the country during the forecast period.

GEFS Week-2 Exceedance Prob. > 150mm  
Valid: 20220523 - 20220529



Low probability of rainfall to exceed 150mm in most parts of the country except in La Union, Pangasinan and Zambales where there is 60-85% chance during the forecast period.

GEFS Week-2 Exceedance Prob. > 200mm  
Valid: 20220523 - 20220529

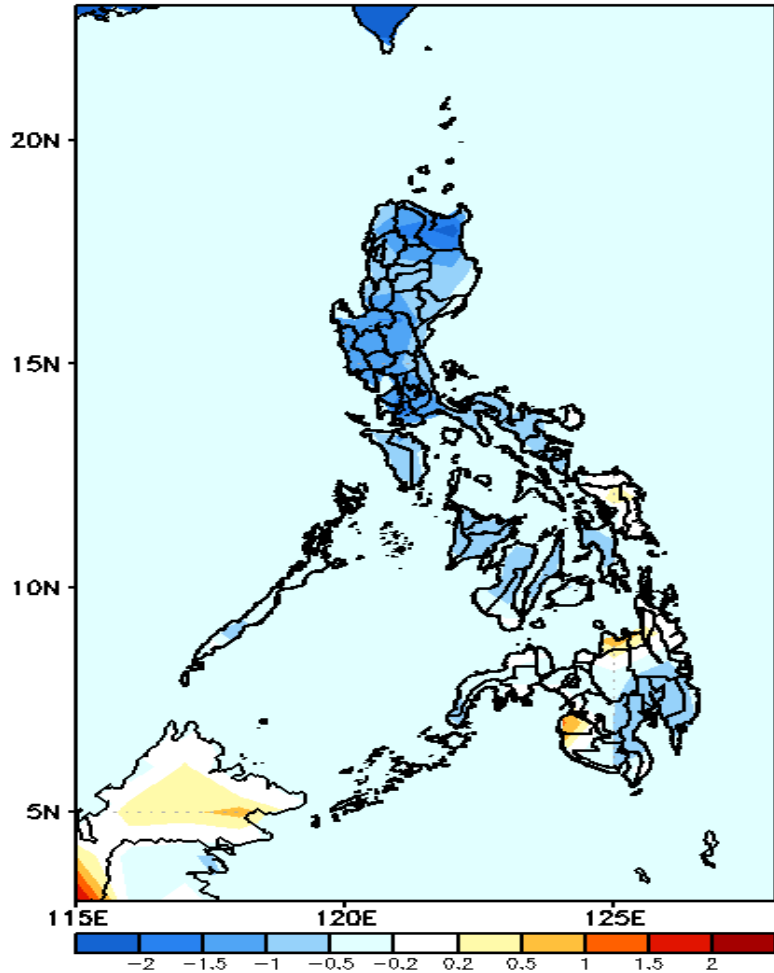


Low probability of rainfall to exceed 200mm in most parts of the country during the forecast period.



# GEFS Week-1 & 2 Forecasts: T2m Anomaly

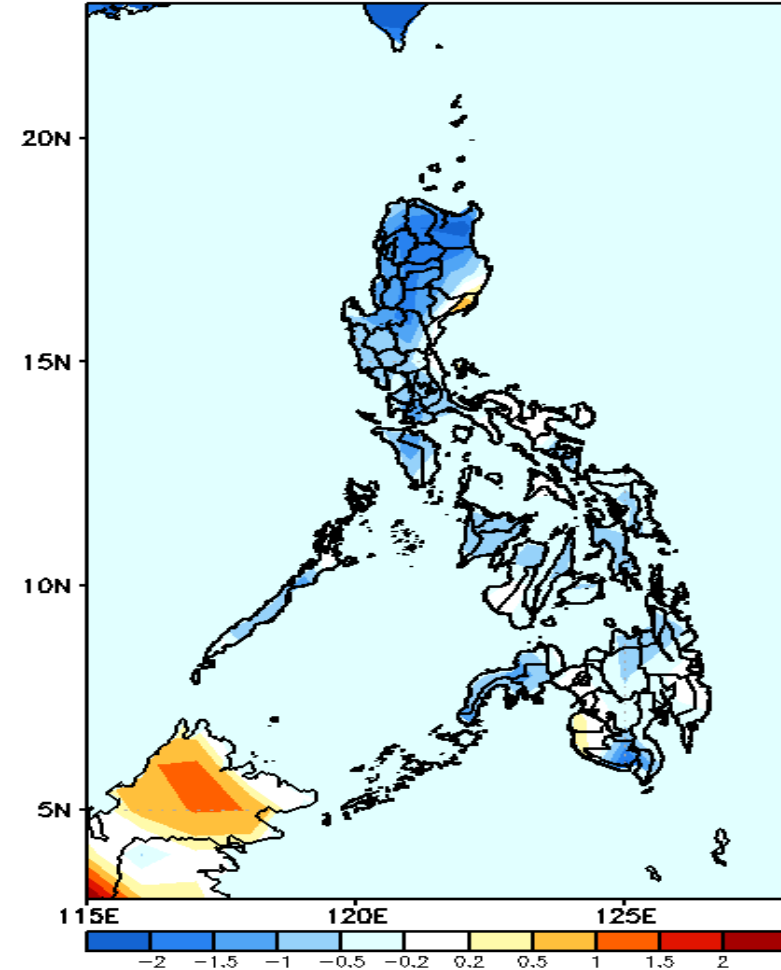
GEFS Week-1 T2m Anomaly  
Valid: 20220516 - 20220522



## 2m Temperature Week 1: May 16-22, 2022

Cooler than average surface air temperature will likely experience in most parts of the country during the forecast period.

GEFS Week-2 T2m Anomaly  
Valid: 20220523 - 20220529



## 2m Temperature Week 2: May 23-29, 2022

Cooler than average surface air temperature will likely experience in most parts of the country during the forecast period.